

12 SIMPLE STEPS OF INSTALLATION

- 1) See illustration # 1. Temporarily place landing on floor system. (the landing will be taken down and fastened securely later)
- 2) Plumb down from the center of the hole in the landing. Mark the center of the hole on the floor below. Take the landing down. Center the base block over the plumb mark on the floor. Outline the base block with a pencil.
- 3) See Illustration # 2. Slide the base block over the pipe and position over circled outline on the floor, making sure the steel flange is inside the recessed area of the base block. Attach the base block to the floor using 2 pcs 3/8" x 2 1/2" lags or sleeve anchors for concrete.
- 4) Slide the starter column (shortest column) over the pipe onto the base block.
- 5) Slide a tread over the pipe. Slide a column over the pipe. Repeat this to the top of the stair.
- 6) Set the landing on top of the last column. Securely attach the landing to the floor by countersinking # 9 x 3" screws. Turn large 1" bolt and washer through the landing into the pipe, leave snug.
- 7) Position treads. Starting with the top tread, plumb down from the landing nosing to the back of the nosing on the tread below at 2" in from the end of the tread. See illustration 3. Using tread set up template provided. Continue lining up the treads to the bottom of the stair. Re-check all treads and tighten 1" bolt securely. 60 foot pounds is recommended.
- 8) Screw balusters shortest to longest into the tap locks inserts on the stair treads. See Illustration # 4. Go to Step # 9.
- 9) Set lower rail section on balusters leaving upper end of rail above balusters. Set upper rail section on balusters. Put washer and serrated nut at joint. Leave loose. Using a rubber mallet, tap rail onto balusters on bottom end leaving top end high. Tap rail onto balusters working up from bottom. Tap 2-3 times to be sure rail is tight to balusters. Tighten serrated nut with a nail set.
- 10) See Illustration # 5. After stair and handrail are installed drill and screw (using furnished finish screws) back of baluster into the underside of the stair rail.
- 11) **LANDING PLATFORM Newel:** This newel will have the bottom routed out round. Screw platform newel into 1" tapped bolt at landing platform.
- 12) Fit the landing rail. This rail may be sent long, after cutting this rail to the desired length install balusters and tap landing rail down by using a rubber mallet.

EXPLODED VIEW WOOD SPIRAL

PLEASE NOTE: STEEL CENTER COLUMN WILL BE APPROX. 2" - 2 3/4" SHORTER THAN FINISH TO FINISH FLOOR HEIGHT

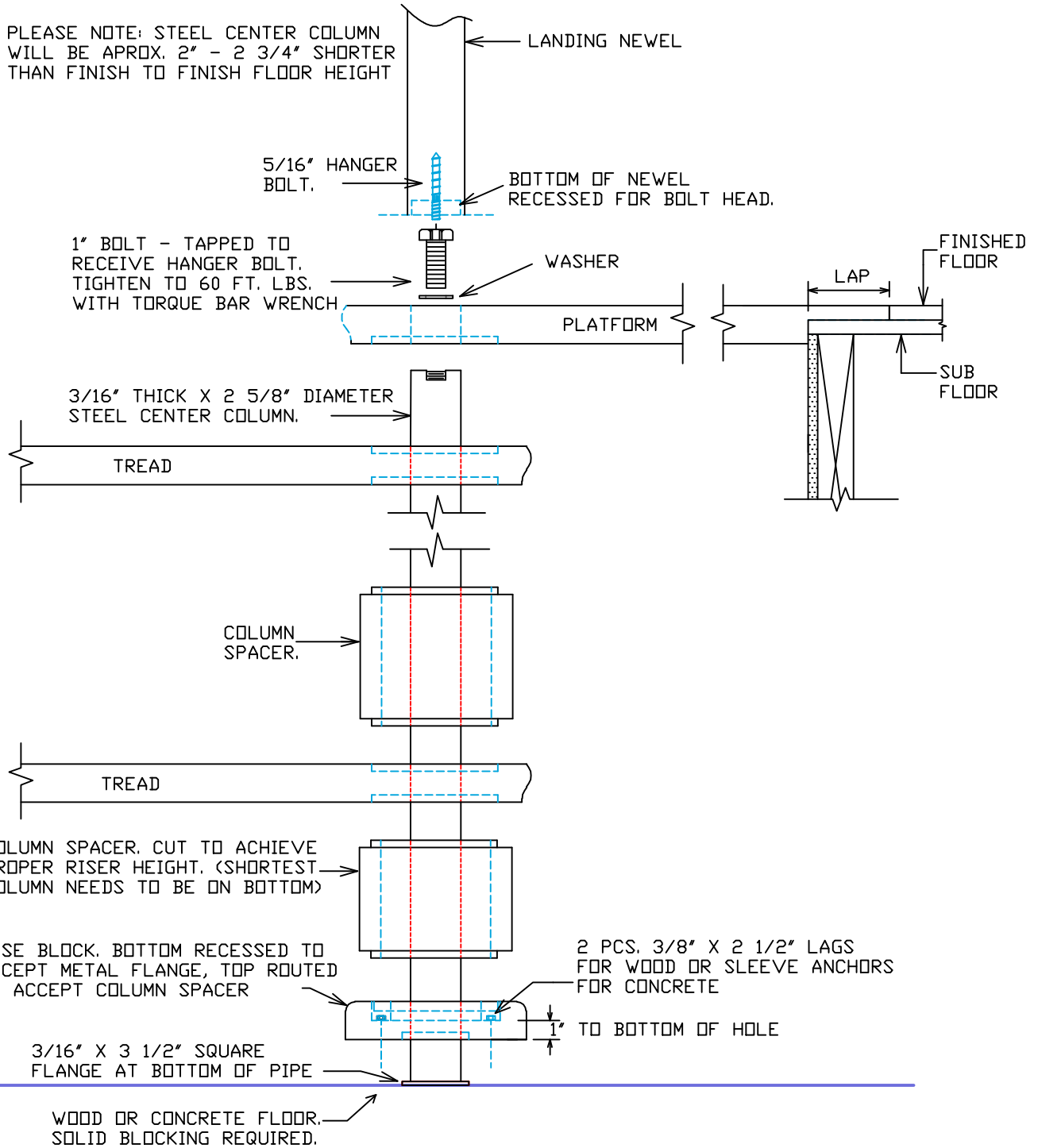
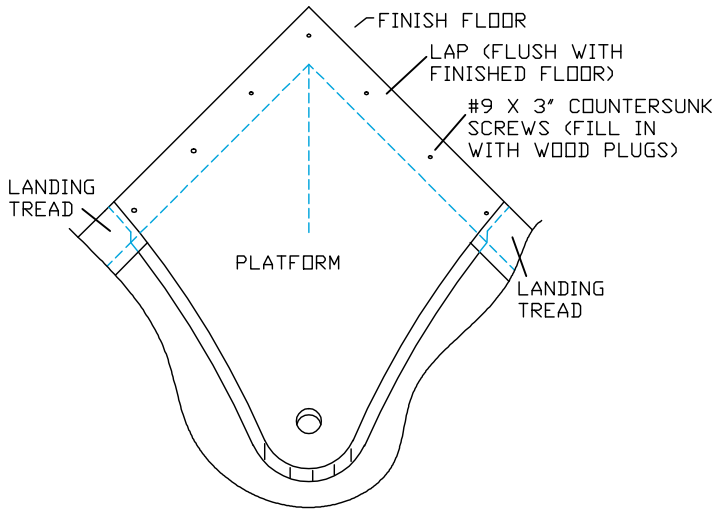
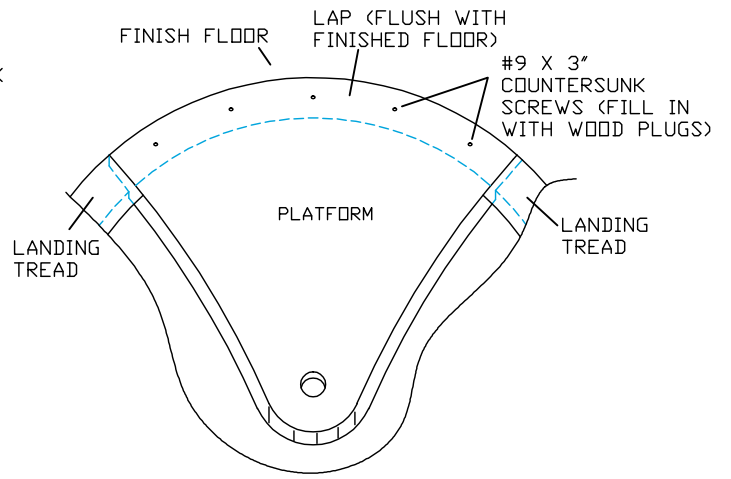


ILLUSTRATION #1

2-SIDED LAPPED LANDING PLATFORM

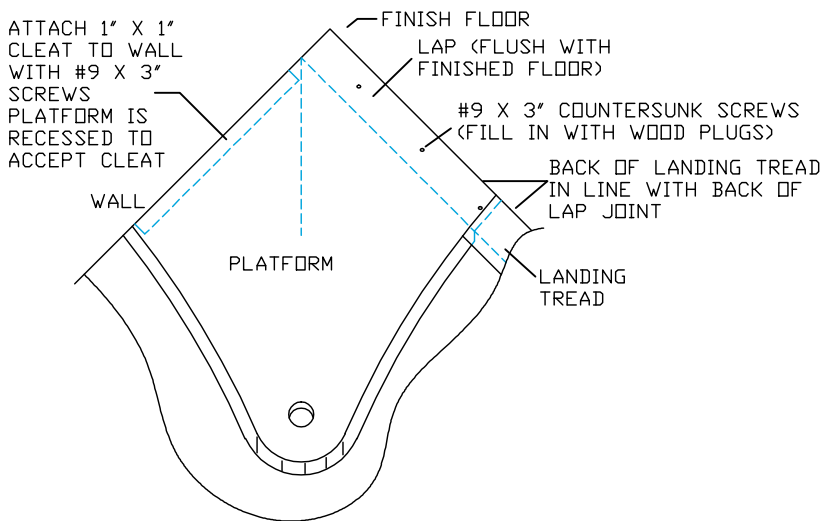


CURVED LAPPED LANDING PLATFORM

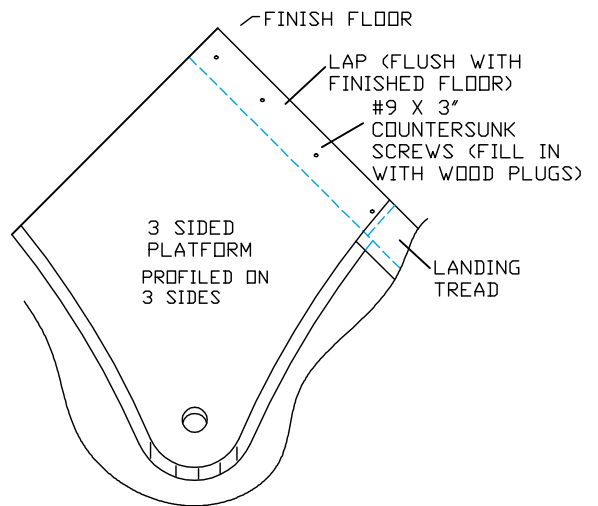


LANDING PLATFORM

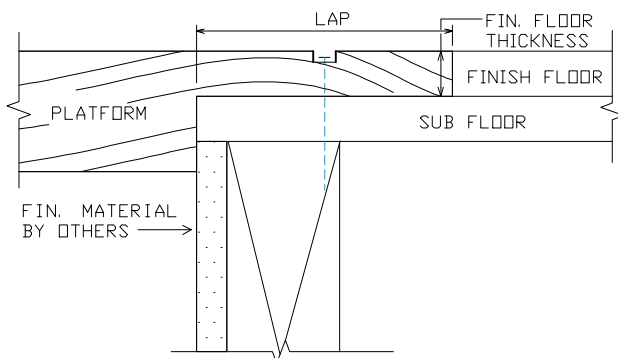
(LAPPED ONE SIDE & CLEAT ON WALL SIDE)



3 SIDED LAPPED LANDING PLATFORM



LAPPED PLATFORM DETAIL



WALL SIDE CLEAT DETAIL

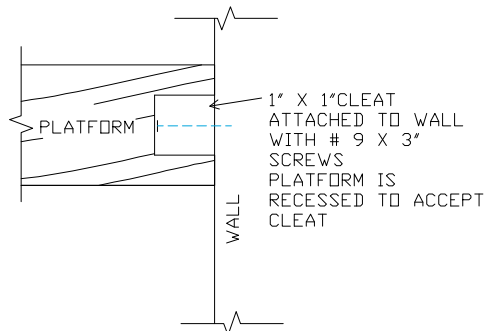


ILLUSTRATION #2

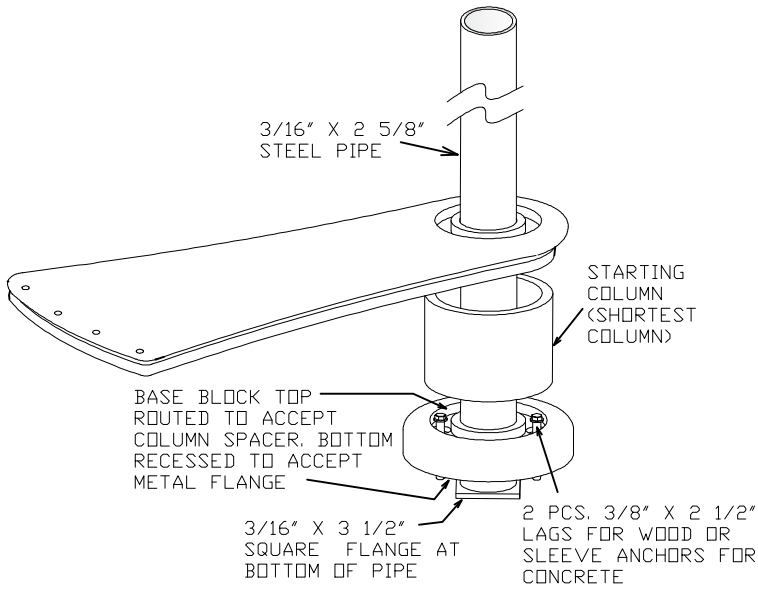


ILLUSTRATION #3

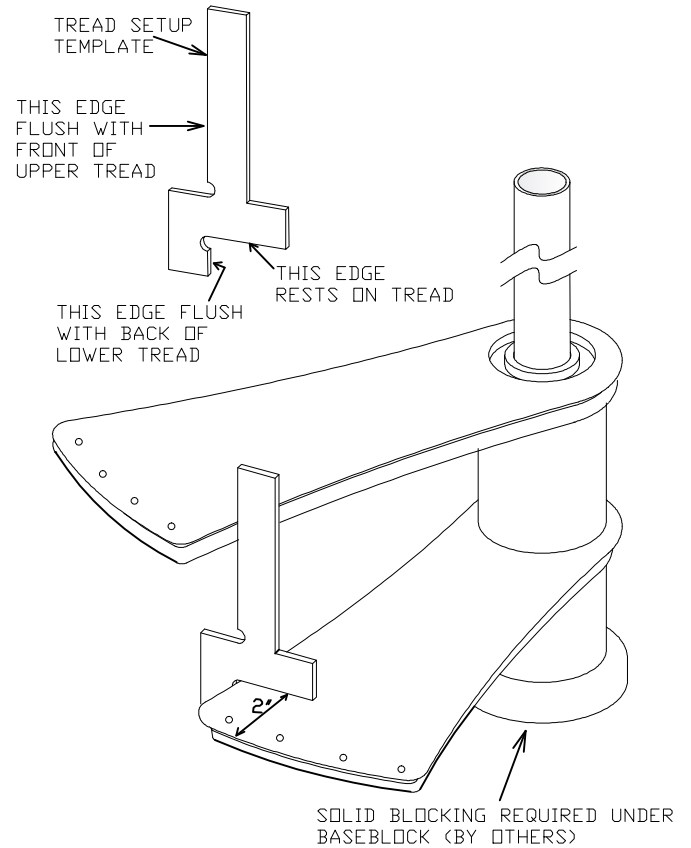


ILLUSTRATION #4

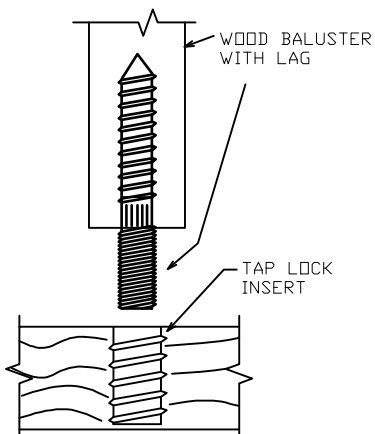


ILLUSTRATION #5

WOOD BALUSTERS
 AFTER STAIR & HANDRAIL IS INSTALLED, DRILL AND SCREW BACK OF BALUSTER INTO UNDERSIDE OF RAIL (USING PROVIDED FINISH SCREWS)
 NOTE: ALL WOOD STAIR AND BALCONY BALUSTERS ARE PRE-CUT BY ARCWAYS.

